



Assembly table

- Including:
- Refrigerator
 - Dispensing system
 - Vacuum tweezers
 - Pressurized air gun
 - Illuminated magnifier
 - Drying oven

Cleaning table

Including ultrasonic bath



www.iew.eu

iew Induktive Erwärmungsanlagen GmbH
Novomaticstraße 16
A-2352 Gumpoldskirchen



+43 (0)2252 607 000-0
+43 (0)2252 607 000-22
office@iew.eu
www.iew.eu

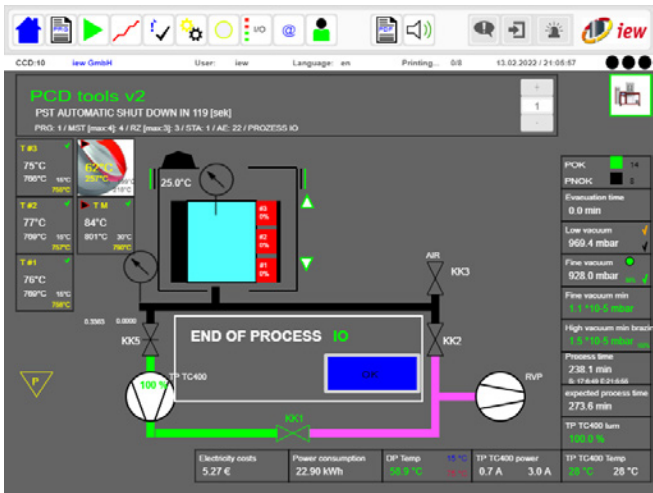
**AUTOMATED VACUUM BRAZING SYSTEM
VVBM200**

The automated vacuum brazing system VVBM200 (Vertical Vacuum Brazing Machine)

24/7 ready to use: For brazing of carbide, ceramic- and diamond tools, the VVBM200 consists of a vertical vacuum chamber with a Pfeiffer Vacuum turbo pump incl. IEW PLC control for precise temperature control, ready for industry 4.0.

The unit can be used for reliable brazing of batches, is easy to operate and the process itself is controlled via a 3-zone temperature control with the IEW PLC.

To keep contamination of the system and the components as low as possible, we decided to use a quartz glass tube as the vacuum chamber in order to be as metal-free as possible. This enables us to further optimize the component quality of the vacuum-brazed products.



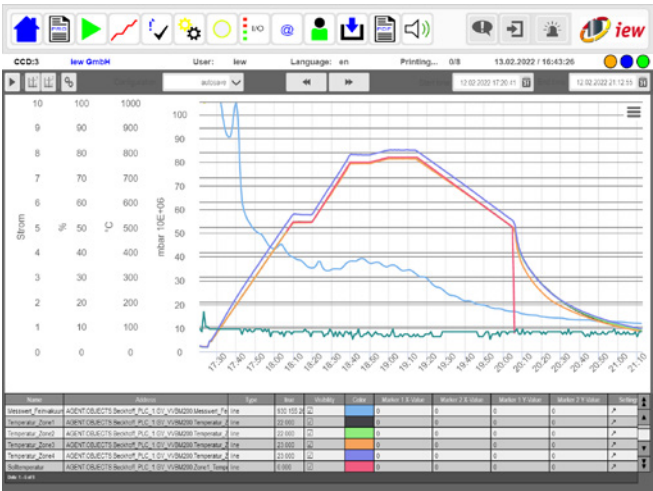
Process interface

Resume Function

The VVBM-Series features an innovative Resume Function that allows interrupted processes (e.g., due to power outages) to resume precisely at the point of failure. This reduces waste, shortens downtime, and ensures reproducible results.

Rapid Cycle

With a fully integrated rapid cycle of approximately 45 minutes, the VVBM-Series enables continuous cycle time optimization – from the loading phase through to the removal of finished tools. The total energy costs are only around 4€ per cycle.



Temperature profile



Vacuum brazing system VVBM200

Technical data VVBM200	
Work area:	up to D 180 mm x L 350 mm
Max. vacuum quality:	10 ⁻⁶ mbar
Max. temperature:	approx. 950 °C
Dimensions:	1885 x 943 x 1831 mm
Weight:	750kg
Mains supply:	3 x 400V/N + PE 40A 50Hz
Power consumption:	max. 28kW
Heating power:	24kW
Compressed air connections:	3-6 bar
Vacuum chamber:	D 188 mm x L 550 mm
Cooling:	Cooling water
Preparation time:	ready to braze within 5 minutes

Brazing is a thermal process for joining equal and composite base materials. In this regard, the vacuum brazing process is the ideal brazing method for high-strength joints for hard-towet materials such as tungsten carbide, ceramic or diamond materials e.g. solid PCD, MCD, CVD, etc. Since no flammable gas or flux is used, it is a very clean and environmentally friendly process, the power consumption can be easily viewed on the display of the machine.

Of course, the vacuum brazing process itself is a greater challenge than, for example, brazing with a gas flame. The process including the selection of the applied brazing filler metal must be selected individually for each material and carried out with different brazing parameters (ramp, holding time, cooling ramp, etc.)

Brazing in 6 steps

1. Cleaning of parts e.g. with ultrasonic bath

2. Apply brazing paste or foil

3. Place cutting edge(s)

4. Drying in predrying oven for 30-60 minutes at 100 °C

5. Rapid Cycle approx. 45 minutes
Normal process time approx. 3 hours

6. Take and control brazed parts

By a vertical arrangement of the quartz glass as the vacuum chamber, IEW has created the opportunity to use multiple levels of fixtures to equip with tools or place long components standing inside the quartz glass. For optimal temperature distribution we have constructed a 3-zone vacuum chamber which can be controlled independently from one another to realize very homogenous temperatures with <10 °C within the chamber. In addition, the system has a partial pressure control to avoid the evaporation of silver and an optional nitrogen cooling to reduce the overall process time.

The thermal distortion of the components to be brazed can be minimized as far as possible by means of the specifically adjustable temperature ramps, nevertheless, depending on the size of the component, it is urgently necessary to ensure an ideal temperature control. Once the optimum setting has been found for a group of components, the vacuum brazing process can be reproduced absolutely reliable.

Different products can be processed in one brazing cycle, it should be taken care of though, that the parts are about equal size or it might lead to insufficient brazing results.

approx. output quantity

Inserts:
500 parts/cycle
2000 parts/shift
6000 parts/day

Round cutter:
50-360 parts/cycle
200-1080 parts/shift
600-3240 parts/day